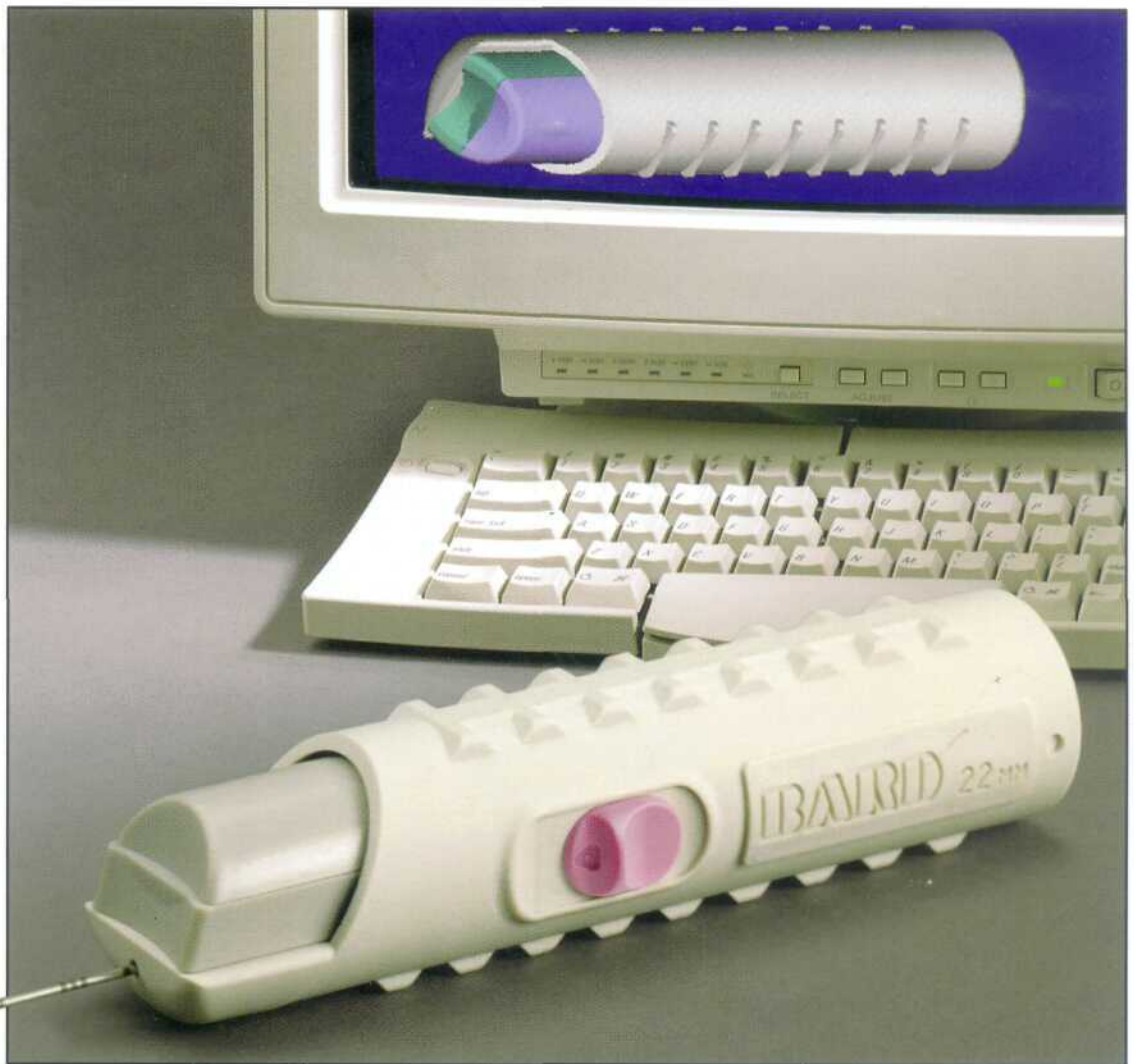


At Bard, we reinvented core tissue biopsy.

---



We made it simpler.

BARD

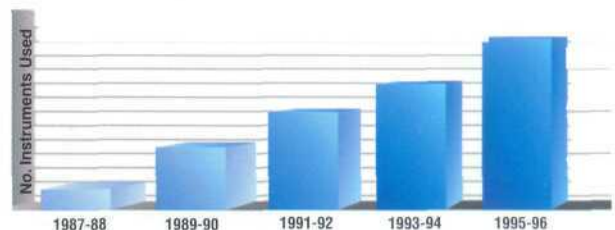
Another innovation in biopsy

# Bard® Max-Core®

Predictable quality.

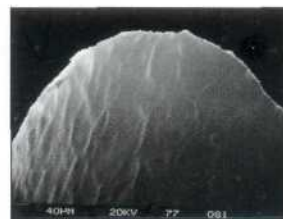
## Extensive clinical experience in automated core tissue biopsy

- ▶ Introducing the newest generation of disposable biopsy instrument — from the company that pioneered the concept of automated core biopsy.
- ▶ During the past decade, Bard has provided quality instrumentation for use in over 2 million core tissue biopsies.

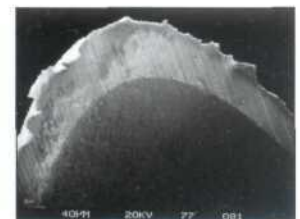


## Quality core samples... time after time

- ▶ Manufacturing quality is the hallmark of the Bard® needle: it delivers consistent core samples with minimal distortion of the cellular pattern.
- ▶ High-speed action results in minimal displacement of tissue.
- ▶ Outer cutting cannula cleanly shears tissue, capturing sample safely in needle notch.
- ▶ Etched needle tip is grit-blasted to create a more diffuse surface.
- ▶ Now with angled sample notch for enhanced needle action.



**Bard® Biopsy Needle**  
Surface Treatment with Electro-Polishing



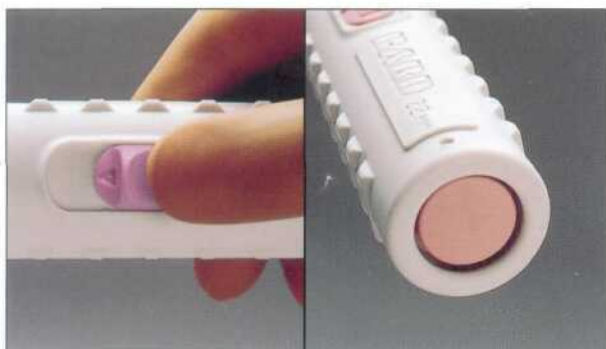
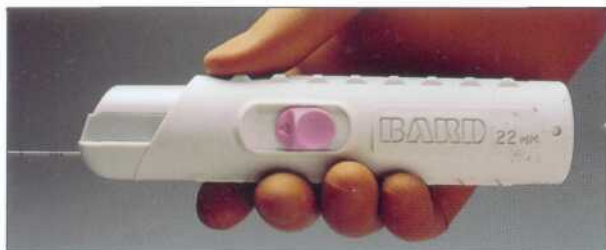
**Competitive Biopsy Needle**  
Untreated Surface



# Disposable Biopsy Instrument

Surprising simplicity.

Simpler by design— for easier handling, exceptional control



## Convenient, one-handed cocking mechanism

- ▶ Innovative instrument design provides the convenience and enhanced control of one-handed cocking: needle cannula is withdrawn and locked by engaging the upper slide mechanism; the stylet is cocked by engaging the bottom slide.

## Non-roll handle design

- ▶ Uniquely engineered handle has strategically placed "ribs" to keep the Max•Core Instrument stationary while not in use.

## Sleek and functional ergonomic design

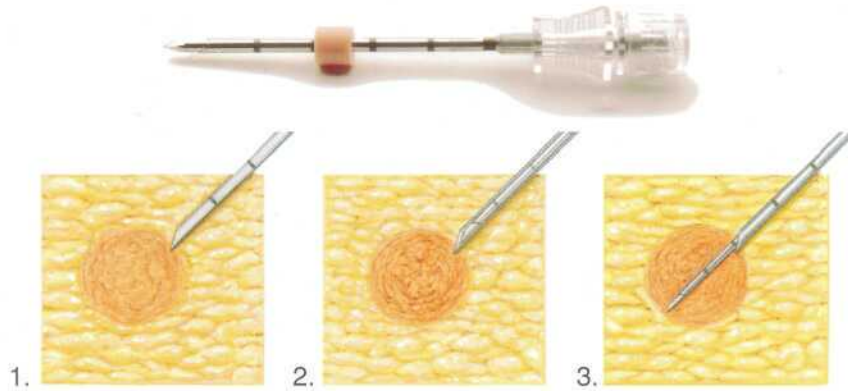
- ▶ The Max•Core Instrument features a handle that is extremely lightweight for easier manipulation and improved control; ribs provide a sure and comfortable grip during use.

## Choice of two firing buttons

- ▶ A choice of two firing buttons accommodates individual user preference: one firing button on the side of the instrument, and an alternate firing button at the rear of the handle. Both buttons are color-coded for easy, accurate needle gauge identification.

# Bard® Max-Core® Disposable Biopsy Instrument

Compatible with the Bard® TruGuide™ Coaxial Biopsy Needle—  
for enhanced efficiency and accuracy



## ▶ A simple procedure to enhance biopsy results

1. Position TruGuide Coaxial Biopsy Needle. Remove stylet.
2. Advance needle coaxially to end of guiding cannula.
3. Fire and withdraw the core tissue biopsy needle. Remove core sample, leaving guiding cannula in place.



## ▶ Repositioning the TruGuide™ Biopsy Needle

4. When additional core samples are needed from the same area, reinsert stylet or biopsy needle and slightly change angle of guiding needle. If samples are needed from a new area, reinsert stylet and reposition coaxial needle.

### Ordering Information

Max-Core® Instrument Order Number	Gauge x Length	TruGuide™ Length (cm)	TruGuide™ Order Number
● MC2010	20 x 10	7.8	C2010A
● MC2016	20 x 16	13.8	C2016A
● MC2020	20 x 20	17.8	C2020A
● MC1810	18 x 10	7.8	C1810A
● MC1816	18 x 16	13.8	C1816A
● MC1820	18 x 20	17.8	C1820A
● MC1825	18 x 25	--	--
● MC1610	16 x 10	7.8	C1610A
● MC1616	16 x 16	13.8	C1616A
● MC1410	14 x 10	7.8	C1410A
● MC1416	14 x 16	13.8	C1416A

**BARD**

C. R. Bard, Inc.  
Tempe, AZ 85281  
1-800-526-4455

01-770-784-6100  
(outside the U.S.)

©2002, C. R. Bard, Inc. All rights reserved.  
Bard and Max-Core are registered trademarks of C. R. Bard, Inc. or an affiliate.  
TruGuide is a trademark of C. R. Bard, Inc. or an affiliate.

Please consult product labels and inserts for any contraindications, hazards, warnings, cautions, and directions for use.  
RA-18 9805-01 R6/95 THP P7/02 1M

